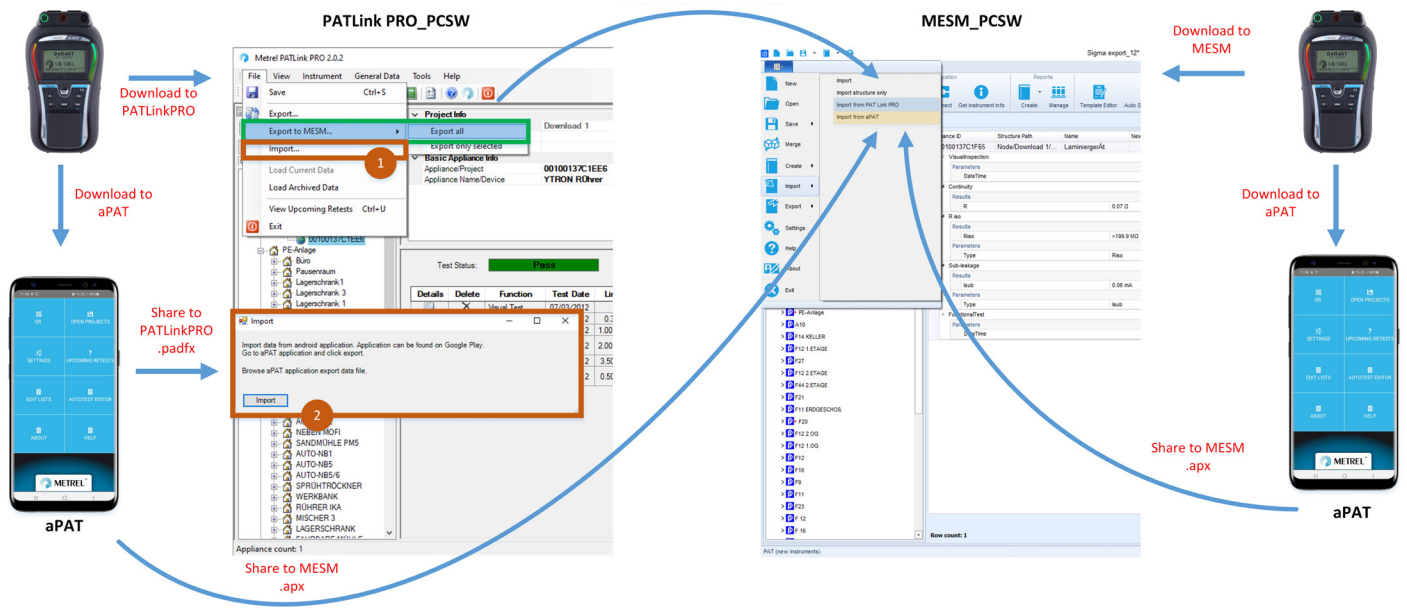


Transitioning from PATLink PRO to MESM PC Software (MI 3309 BT DeltaPAT/GT)

Comparison: MESM vs PATLink PRO

	Metrel Electrical Safety Manager		PATLink PRO Plus	
	Basic license	PRO license	Basic license	PRO license
Data Download	•	•	•	•
Print out of test results	•	•	•	•
Print out of professional reports		•		•
Upcoming retests (Scheduler)	•	•	•	•
Export to Excel	•	•	•	•
Export to Xml	•	•	•	•
Data import from aPAT	•	•	•	•
AutoSequence Editor	•	•		•
PRO Export to Excel		•		
Trend				•

Workflow: PATLink PRO to MESM



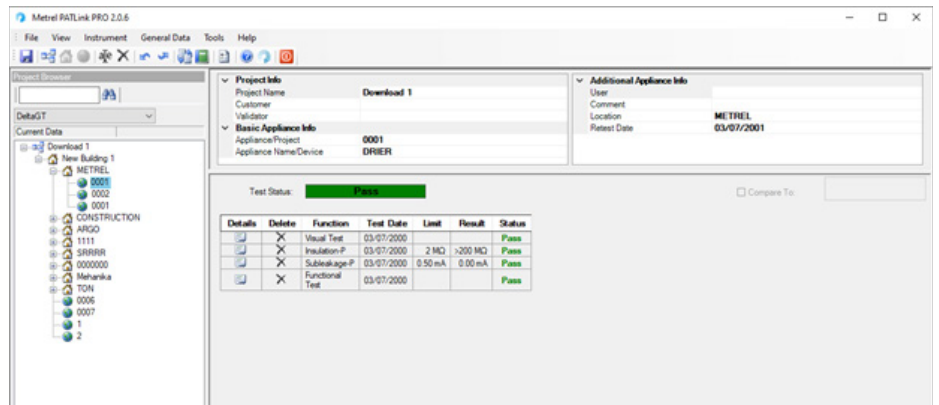
Structure differences: PATLink PRO vs MESM

The MI 3309 BT DeltaPAT/GT supports only single level structure. This means that for each measurement you are allowed to add only the following parameters: Appliance ID, Appliance Name, Test date (as set on the tester), Retest period, Location. The PATLink PRO has a built-in feature which enables grouping of saved measurements by a parameter "Location", meaning that the measurement or an AutoSequence® using same parameter for "Location" are structured under same structure element.

aPAT



PATLink PRO



Test structure differences between aPAT and PATLink PRO

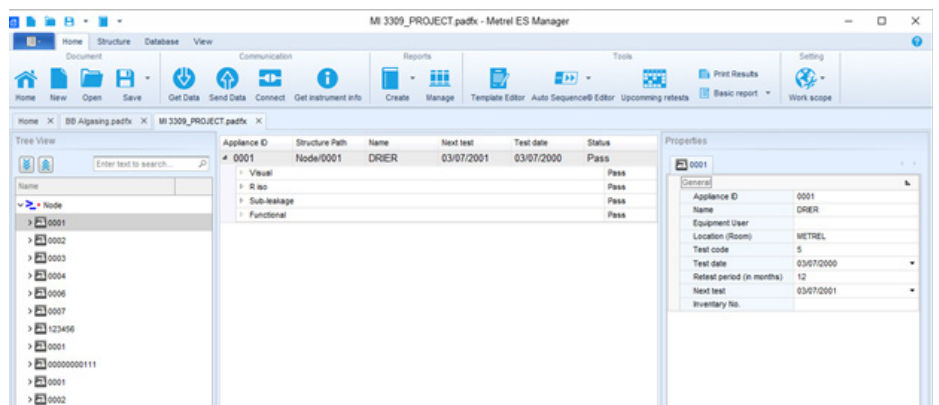
Test structure differences between aPAT and PATLink PRO

The MESM uses different types of structural elements in comparison with PATLink PRO. Therefore in the MESM, the parameter "Location" is just a sub-parameter of a structure object "Appliance". We plan to add (sometime in the near future) a feature enabling to sort structure elements "APPLIANCE" based on their parameters. Meaning that there will be an option available to sort appliances based on their location.

aPAT



PATLink PRO

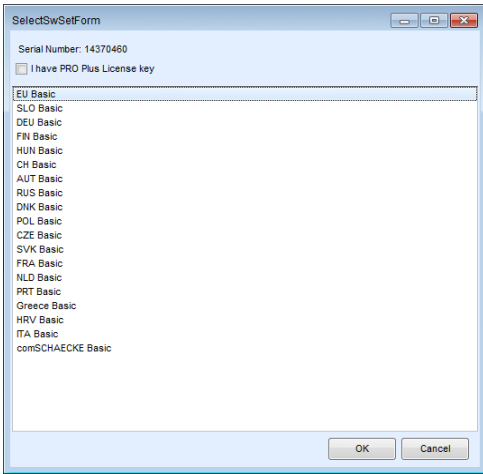


Same test structure view in both applications

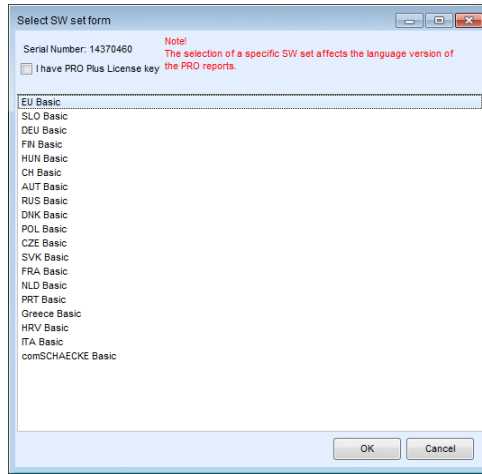
MESM: connecting the MI 3309 BT DeltaPAT/GT for the first time

When the MI 3309 BT DeltaPAT/GT is connected to the MESM for the first time, the following window appears.

MESM official v1.17.0.6767



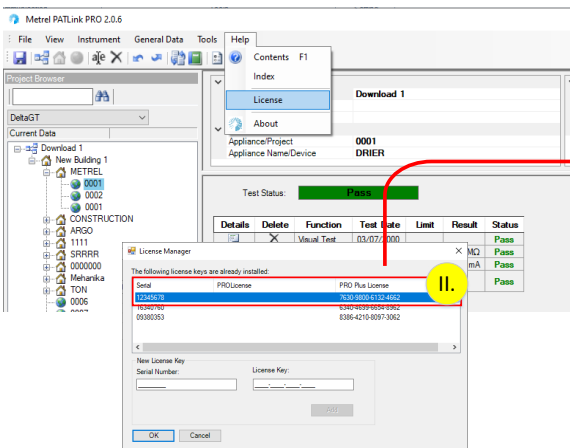
MESM beta v1.18.0.xxxx



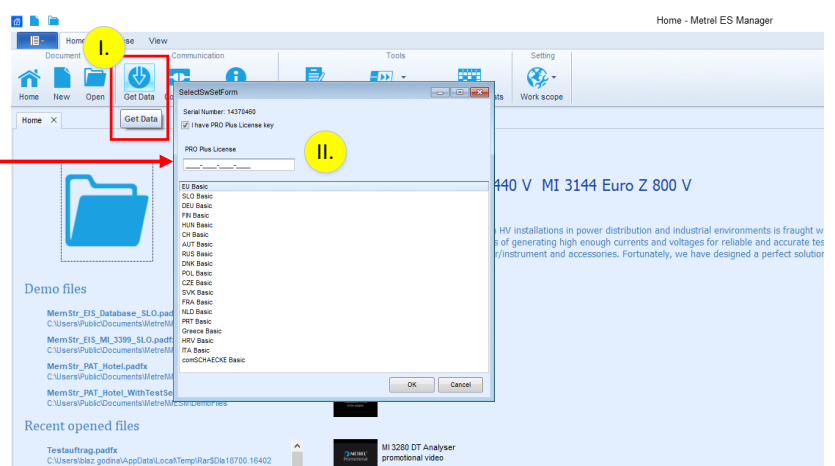
NOTE: User has to select one of available language packs, which will also determine the source language of the PRO reports.

When an existing user of PATLink PRO wants to switch to MESM, and already owns a PATLink PRO Plus license he can copy it to MESM and he will unlock full functionality.

PATLink PRO

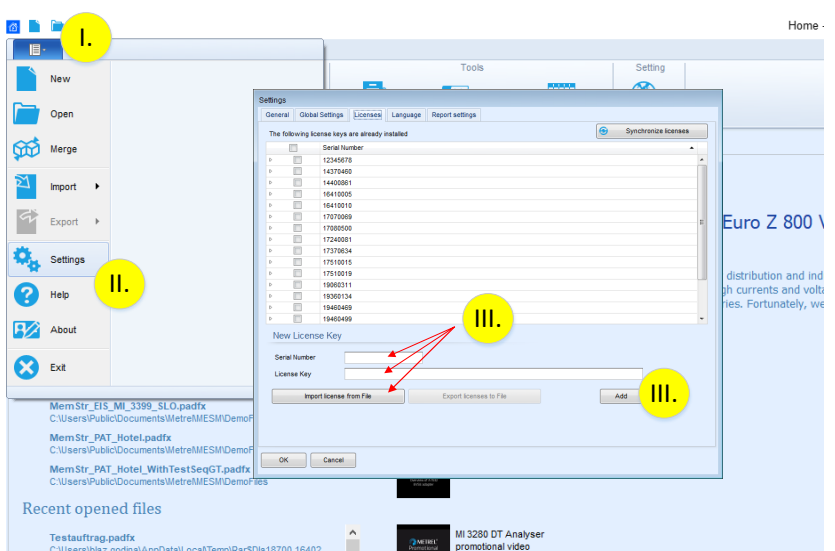


MESM



Basic MESM license

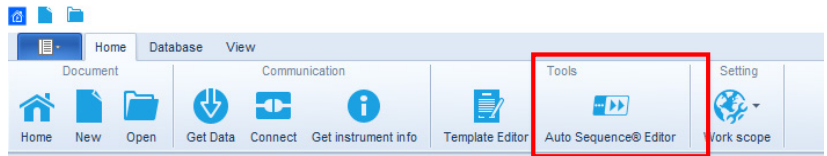
New user receives in any MI 3309 BT DeltaPAT/GT accessory set a Basic MESM license, which must be copied to MESM licenses tool. Same procedure must be done for the PRO license.



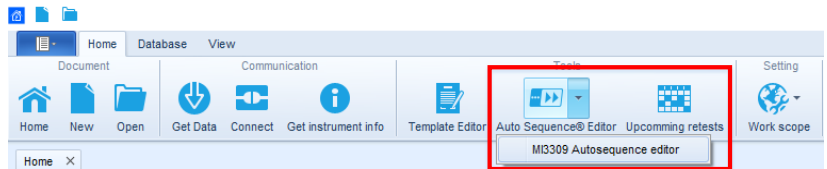
AutoSequence® editor for MI 3309 BT DeltaPAT/GT

When the MESM is first installed, the AutoSequence® editor for MI 3309 BT DeltaPAT/GT is hidden.

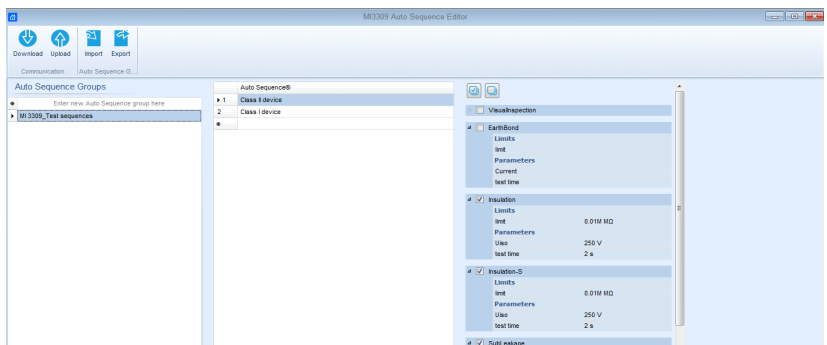
When the MESM is first installed, the AutoSequence® editor for MI 3309 BT DeltaPAT/GT is hidden.



Once the license for the MI 3309 BT DeltaPAT/GT is added, a drop down menu appears on the AutoSequence® editor tool, enabling the selection of MI 3309 AutoSequence editor.

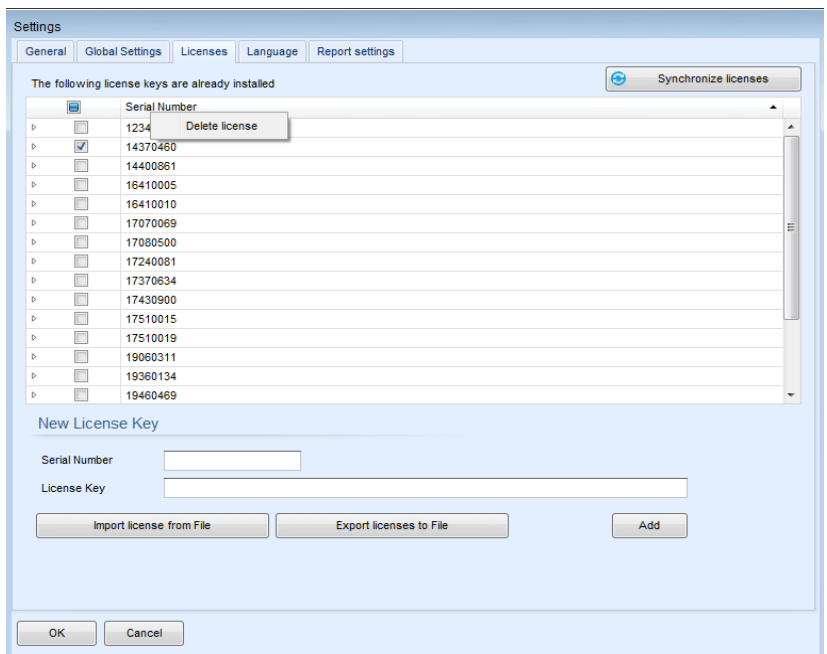


AutoSequence® editor for MI 3309 BT DeltaPAT/GT.



Missing PRO license

If certain steps were skipped during the first connection (transfer of license from PATLink PRO Plus to MESM was not performed), they can only be repeated by deleting the BASIC license from the list of available licenses. Select the license that needs to be deleted, and click right mouse button to get the option "Delete license".



METREL D.D.

Measuring and Regulation Equipment Manufacturer
Ljubljanska 77, SI-1354 Horjul, Slovenia
T +386 (0)1 75 58 200, F +386 (0)1 75 49 226
metrel@metrel.si, www.metrel.si